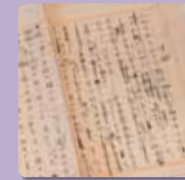
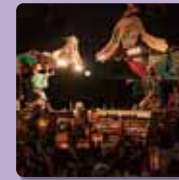
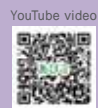


Abiko: A Town Where Tales Are Born

ABI ROAD



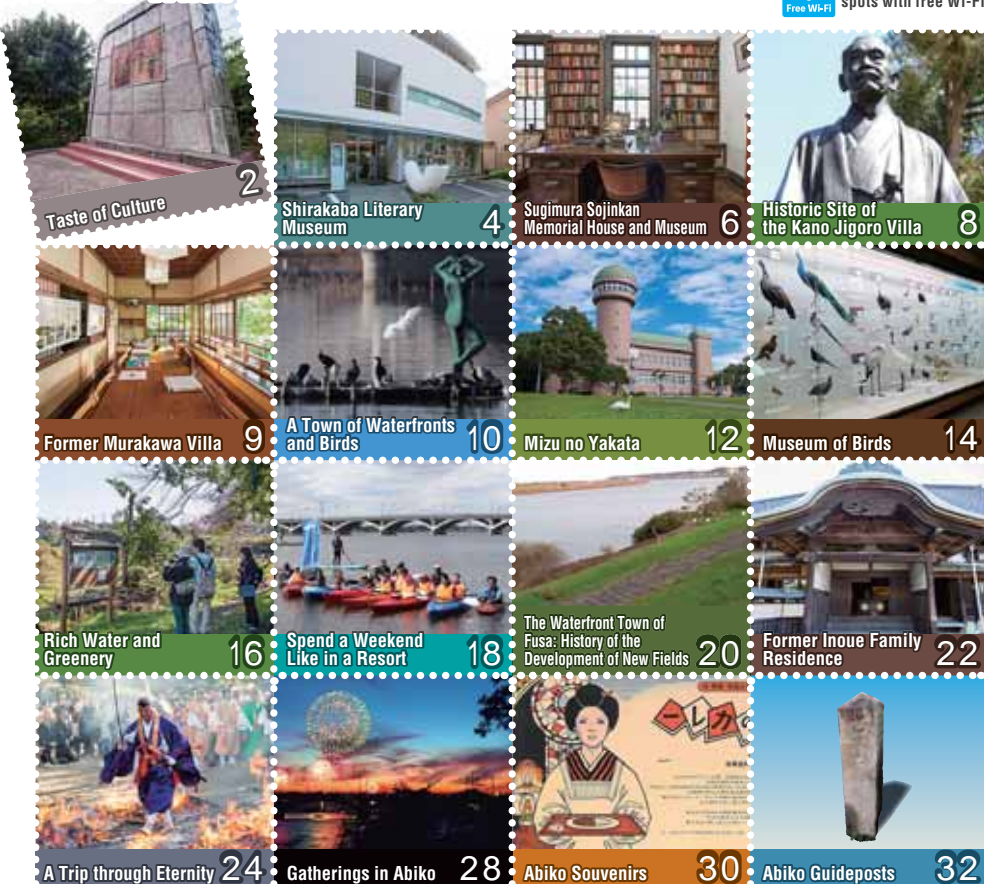
Shall we take a trip down journey lane? ♡



AR Abiko Guidebook

This Is What the Town of Abiko is All About

 Symbol indicating spots with free Wi-Fi.




Visitors are encouraged to use the discounted entry ticket for three museums or passport for two museums.
(Sugimura Sojinkan Memorial House and Museum, Shirakaba Literary Museum, Museum of Birds)

By smartphone By tablet

The pictures come alive!



AR app (free)

When you hold your smartphone or tablet over photos with the  mark in this magazine, you can view listing videos and slide shows.

Inquiries: Hoshosha Co., Ltd.
043-254-8611

Images provided by:

チバテレビ J:COM



Download the app via the QR Code listed on the right to begin enjoying the world of AR!



The Abiko Tourism App "Abiko Meguri" Provides tourists information about the town and a convenient route search function.
Download the app via the QR code.



ABI ROAD is available on smartphones and tablets.
Available also from PATW, the Rakuten travel pamphlet app.

PATW



An open park that allows everyone to enjoy the great natural environment near Lake Teganuma. Visitors can relax for the entire day, experience miniature trains, rent boats, and take part in many other activities.

Teganuma Park



26-4 Wakamatsu, Abiko City
Entry fee: Free
By foot 10 minutes from Abiko Station (750 m)



This is a park full of waterfronts and greenery that runs along Lake Teganuma, which is a symbol of Abiko City. You can view waterfowl right up close, and since benches have been installed you can spend a relaxing time gazing out at Lake Teganuma. It also offers miniature train experience, as well as cycle and boat rental.

See P19

Tourist Information Center in Abiko



Abiko Information Center(Abishirube)

As a center for disseminating information on Abiko City, it provides information on sightseeing, lodging, events, and more. In addition, it provides information on sightseeing spots, offers referrals for tour guides through private organizations, and more.

One minute walk from the south exit of Abiko Station on the JR Joban Line
2-1-10, Honcho, Abiko City 04-7100-0014
Hours of operation: 9 : 00 - 18 : 00 (closed on New Year holidays)
By foot 1 minute from Abiko Station



A Town That Has Yielded Great Works of Literature

In the Taisho Period, Abiko was home to Yanagi Muneyoshi, Shiga Naoya, and Mushanokoji Saneatsu of the Shirakaba school. They produced numerous works here in Abiko. They would occasionally walk around Hake Road, and there was one time when they rowed through Lake Teganuma in a boat to discuss their dreams for the future. Many of the landscapes that nurtured their dreams still remain in Abiko to this day. Why not search for the lingering vestiges of Taisho Roman style as you trace back through their footsteps?



Sugimura Sojinkan Memorial House and Museum See P6
By foot 10 minutes from Abiko Station (750 m)



Sanjuso Remains

This is the remains of the residence of Yanagi Muneyoshi, one of the key figures of the Shirakaba school. The name Sanjuso (which means house of the three trees), is derived from the three ancient beech trees that are believed to represent wisdom, fortune, and long life in the local region. Muneyoshi was a thinker, aesthetician, and religious philosopher who gave rise to the Mingei movement. He was the nephew of Jigoro Kano. (Closed to the public)

1-9, Midori, Abiko City
By foot 10 minutes from Abiko Station (700 m)



Remains of the Former Residence of Mushanokoji Saneatsu

Mushanokoji Saneatsu was one of the central players in the launch of the magazine Shirakaba. He moved to a location overlooking Lake Teganuma purchased by Shiga Naoya in 1916. (Closed to the public)

2-21, Funato, Abiko City
By foot 17 minutes from Abiko Station (1.4 km)

Tenjin-zaka Hill

Sanjuso and Tenjin-zaka, a hill on which the fruit from the beech trees fell, were said to have been greatly loved by the cultural figures who gathered in Abiko back in the Taisho Period.

By foot 11 minutes from Abiko Station (900 m)



A road that cultural persons from long ago walked down



Bernard Leach Monument

Bernard Leach was a British potter who was deeply involved in the Shirakaba school and Mingei movement.

34 Abiko Shinden, Abiko City
By foot 14 minutes from Abiko Station (1.0 km)



Historic Site of the Kano Jigoro Villa

 See P8

By foot 10 minutes from Abiko Station (750 m)



Former Murakawa Villa

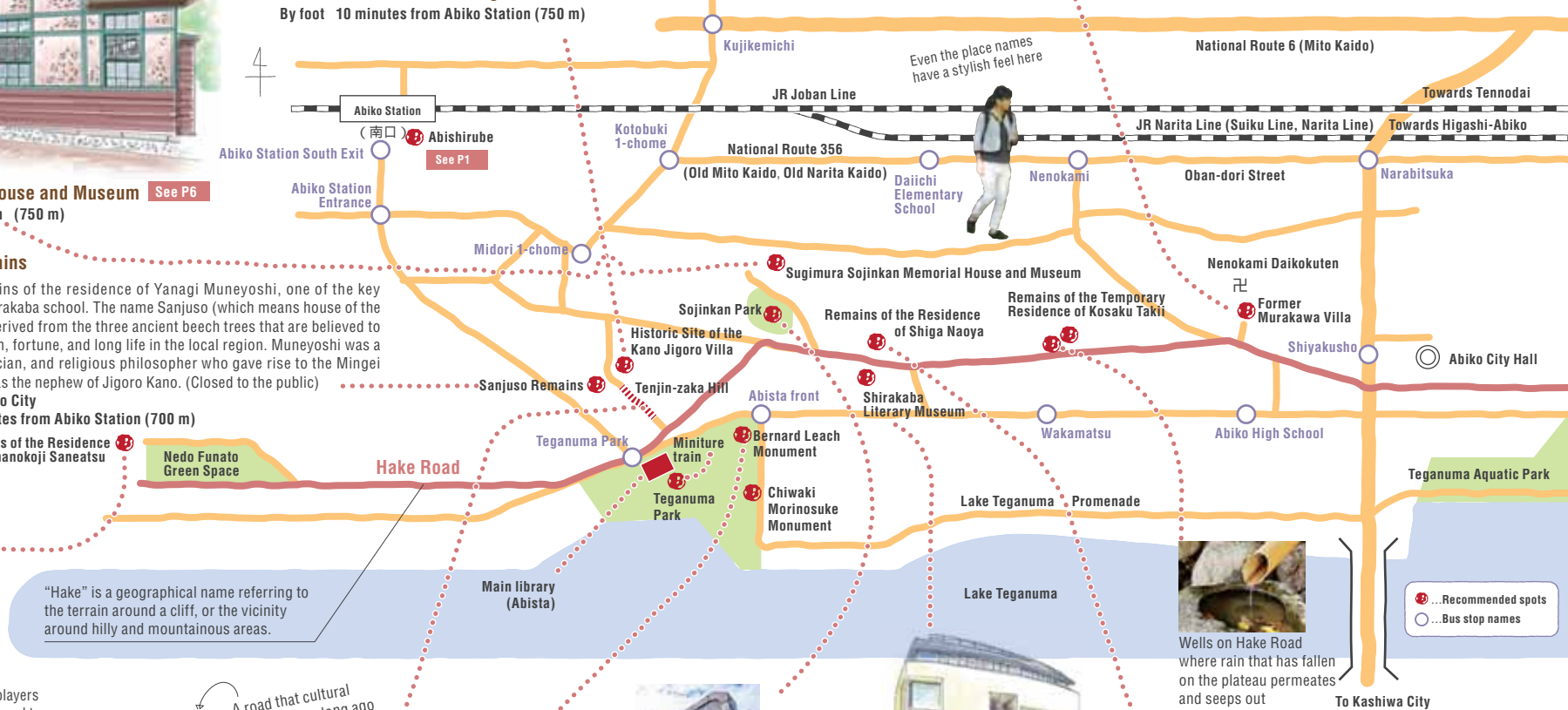
 See P9

By foot 20 minutes from Abiko Station (1.6 km)



It is also famous as the town where Nahoko Uehashi, who is the Hans Christian Andersen Award-winning novelist known for works such as the Moribito: Guardian of the Spirit series, did her writing.

Stroll through the vestiges of the past



Wells on Hake Road where rain that has fallen on the plateau permeates and seeps out



Shirakaba Literary Museum

 See P4

By foot 14 minutes from Abiko Station (1.1 km)

Sojinkan Park

This is a park overlooking Lake Teganuma that is located on top of a hillock right by the rear entrance to the Sugimura Sojinkan Memorial House and Museum. There is a stone tablet inscribed with a haiku by Sojinkan here. It reads: Tsukuba in sight As I gaze through winter air That is crystal clear.

2-4, Midori, Abiko City
By foot 10 minutes from Abiko Station (800 m)



Remains of the Residence of Shiga Naoya

 See P5

2-7, Midori, Abiko City
By foot 14 minutes from Abiko Station (1.1 km)

Featuring a collection of numerous materials related to the Shirakaba school, which played a leading role for contemporary Japanese art as a whole.



Shirakaba Literary Museum

2-11-8 Midori, Abiko City 04-7185-2192

Hours of operation: 9 : 30 – 17 : 00 (entry until 16:00)

Closed: Mondays (or the next weekday if this is a national holiday), December 29 - January 3, Days of maintenance

Entry fee: 300 yen for general admission, etc.

By foot 14 minutes from Abiko Station (1.1 km)



The original handwritten manuscript of 'A Dark Night's Passing' by Shiga Naoya.



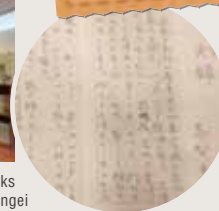
Yanagi Muneyoshi, Shiga Naoya, and Mushanokoji Saneatsu, who played key roles in the Shirakaba magazine in the Taisho Period, all lived in Abiko. The museum possesses mainly manuscripts, letters, and other artwork from the Shirakaba school. It has a music room underground where visitors can appreciate songs by Yanagi Kaneko, Yanagi Muneyoshi's wife, who was also a vocalist.



This museum possesses and displays works by members of the Shirakaba school and Mingei movement artists, such as paintings by Mushanokoji Saneatsu and artwork by Bernard Leach.



The library. Here visitors can view books related to the Shirakaba school and Mingei movement, such as original handwritten manuscripts from Shiga Naoya.



Stroll through the vestiges of the past



The museum shop. What about a souvenir from the museum, such as the Shirakaba curry?



The large exhibition room. Various works are on display during each exhibit.



The medium exhibition room (piano salon). Visitors can hear live musical performances given by the townspeople staff on the grand piano loved by Yanagi Kaneko at the end of her life.

The heritage of great novelist Shiga Naoya in Abiko

~ Acquisition of the precious Yamada collection ~



Shiga Naoya, called the Syosetsu no Kamisama (God of literature), deeply loved Abiko and Lake Teganuma. The collection offered by the Yamada family, who are descendants of Shiga Naoya, contains original manuscripts, writings, oil paintings, daily life items from the artist, as well as autographed books. This precious collection will let the visitors learn more about the fascinating personality of Shiga Naoya.



Spot related to Shiga Naoya



Remains of the Residence of Shiga Naoya (cultural property designated by the city)

Only the library of Shiga, who penned most of his works between 1915 and 1923, remains. The library has a gabled roof and was part of the wooden home that was designed by Shiga himself and constructed by Sato Takazo, a craftsman from Abiko, in 1921. After being relocated, materials from the initial structure of the library were reused to restore it at this location.

2-7, Midori, Abiko City

By foot 14 minutes from Abiko Station (1.1 km)

Sugimura Sojinkan Memorial House and Museum

(cultural property designated by the city)



Salon: Books related to journalism from the Meiji through the Showa Periods, which constitute Sojinkan's collection, have been lined up. The built-in bookshelves were commissioned to Sato Takazo, skilled artisan from Abiko.



Sugimura Sojinkan was an international journalist who was active from the Meiji to the Showa Periods. He originally used this house as his second home, but after the Great Kanto Earthquake he moved to Abiko with his family, where he lived the rest of his life until his death in 1945. Camellia, one of his favorite plants, has been planted in the garden, as have trees that change color in autumn at pivotal points. Back then water flowed through the garden, and it is said that the Lake Teganuma scenery could be seen nearby. This building is evocative of the Taisho Roman aesthetic, and has even been used as a filming location.

2-5-5 Midori, Abiko City 04-7187-1131

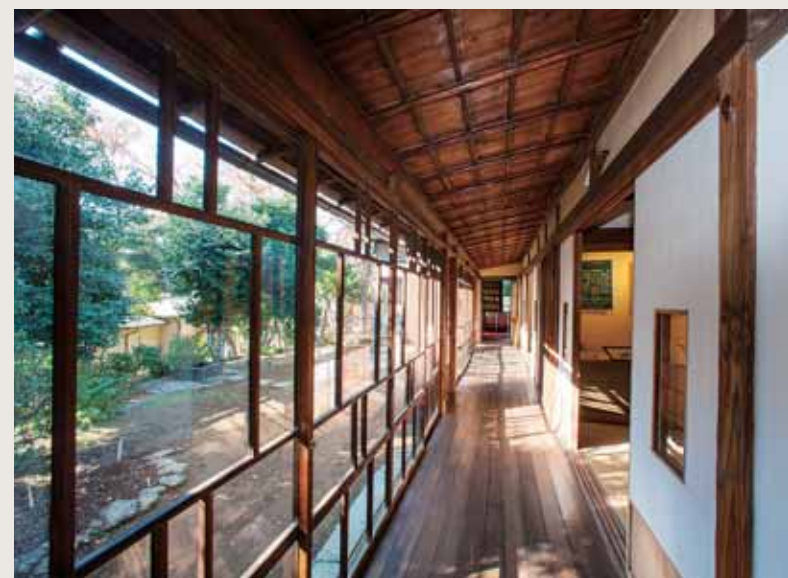
Hours of operation: 9:00 – 16:30 (entry until 16:00)

Closed: Mondays (or the next weekday if this is a national holiday), December 29 – January 3, internal organization days

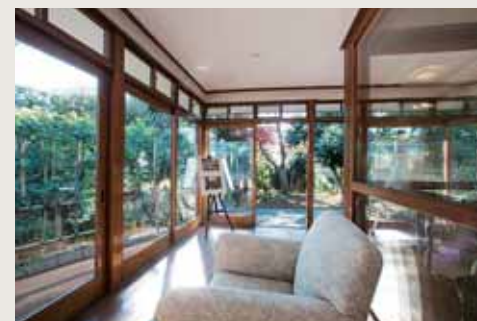
Entry fee: 300 yen for general admission, etc.

By foot 10 minutes from Abiko Station (750 m)

The main building built when Sojinkan took up permanent residency in Abiko is now used as a museum. Having lived through the Great Kanto Earthquake, where he lost two children, Sojinkan requested that the architect build a structure with a light roof that would resist collapsing.



At the end is a salon, and inside is an eight-tatami mat parlor, in front of which are a row of six-tatami mat rooms where the family spent time. Camellias, which were a favorite of Sojinkan, were planted in the garden.



This room was originally an open veranda. Back then Lake Teganuma could be viewed from here.



This path passed from the main building to the garden and on to the Sawa House on the property.



The material comprising the outer wall has an impressive feel.

Stroll through the vestiges of the past

Kano Jigoro was the founder of Kodokan Judo. He is known as the “father of Japanese athletics” since he first led Japan to the Olympics as the first president of the Japan Sport Association (Japan Amateur Athletic Association at the time).



Historic Site of the Kano Jigoro Villa (Tenjinyama Green Space park)

1-10 Midori, Abiko City
By foot 10 minutes from Abiko Station (750 m)



Kano Jigoro was an educator and the founder of Kodokan Judo. In 1911, he built a villa on a hill facing Lake Teganuma in Abiko. He developed close friendships with the locals, such as the mayor, as well as Sugimura Sojinkan, an international journalist who lived in the neighborhood, and Murakawa Kengo, a professor at Tokyo Imperial University. Moreover, he opened a plantation (Kano Koraku Plantation) in the vicinity of his villa and hired specialists to make his first steps in the farming business. After Yanagi Muneyoshi, his nephew and a central figure of the Shirakaba school, moved next to Kano's villa, Shiga Naoya and Mushanokoji Saneatsu also settled in Abiko and created an exquisite cultural environment there. This is another reason why Kano Jigoro is an important personality for Abiko.



Kano Jigoro founded Kodokan Judo and diffused it based on the principles of “Seiryoku-Zenyo” and “Jita-Kyoei”. He committed himself to education by working for a long time as the president of the Tokyo Higher Normal School and, at the same time, was the first oriental person to become a member of the International Olympic Committee (IOC). He helped Japan to participate in the Olympics and to contribute attract the Olympics in Tokyo in 1940. Photo by courtesy of Kodokan Judo Institute.

This bronze statue of Kano Jigoro wearing a kimono was made by Fumio Asakura, a sculptor called the “Rodin of Japan”. It measures 2.14 m in height (about 3 m with the base) and was installed on the site of the villa on a hill in front of Lake Teganuma. It is the 7th statue of that kind (now only 6 remain). Other statues based on the same model can be found at the Kodokan Judo Institute and the University of Tsukuba. It has been built mainly by local associations of citizens to celebrate the 50th anniversary of the city's founding and the Tokyo Olympics, originally planned to be held in 2020.



An area for summer homes from the Taisho to Showa Periods grew up on the banks of Lake Teganuma. We encourage visitors to not just look around, but spend a relaxing time indoors.

Stroll through the vestiges of the past

Design by Bernard Leach



Former Murakawa Villa (cultural property designated by the city)

2-27-9 Kotobuki, Abiko City Inquiries: Culture and Sports Section, Board of Education, Abiko City 04-7185-1583
Hours of operation: 9:00 – 16:00 (entry until 15:30)
Closed: Mondays (or the next weekday if this is a national holiday), December 29 – January 3 Entry fee: Free
By foot 20 minutes from Abiko Station (1.6 km)



Annex – The rooms on the Lake Teganuma side have enormous glass windows, where furnishings from back at the time remain unchanged.



Main building – The Japanese-style rooms still retain the air of the Edo Period, with attention paid even to minor details.



This summer home was built by Murakawa Kengo and safeguarded by Kentaro, two generations of scholars of ancient history in the West who were father and son. It consists of the main building, which was a reconstruction of the detached house of (the Abiko Honjin,) a lodging house for high-ranking people, as well as an annex that was constructed in 1927 by Kengo, who emphasized a residence that was more about “shelter, food, and clothing,” rather than “clothing, food, and shelter.” Once here, visitors can experience the atmosphere it had from back when it was used as a summer home. The back gate faces out on to Hake Road. It is said that you could view the birds frolicking in the lake from indoors up until the 1950s. Sometimes there are local guides here that can fill visitors in on the details.



Annex – The walls of the combined bedroom / study are plaster walls in a subdued blue shade.

A Town of Waterfronts and Birds

At roughly 30 minutes from the heart of Tokyo, visitors who come to Abiko can encounter an abundance of nature. When you stroll down the promenade that runs along Lake Teganuma, it is almost as if the waterfowl are calling out to you. As you watch the birds you seem to forget entirely about the passage of time.

What's more, the evening sun setting on Lake Teganuma is so beautiful. As the sky is changing its color second by second, the surface of the water changes its color. We urge you to feel yourself the nature of Abiko, a town nestled along Lake Teganuma.



Museum of Birds See P14

By foot 25 minutes from Tennodai/Higashi-Abiko Station (2 km)



Konoyama momoyama Park

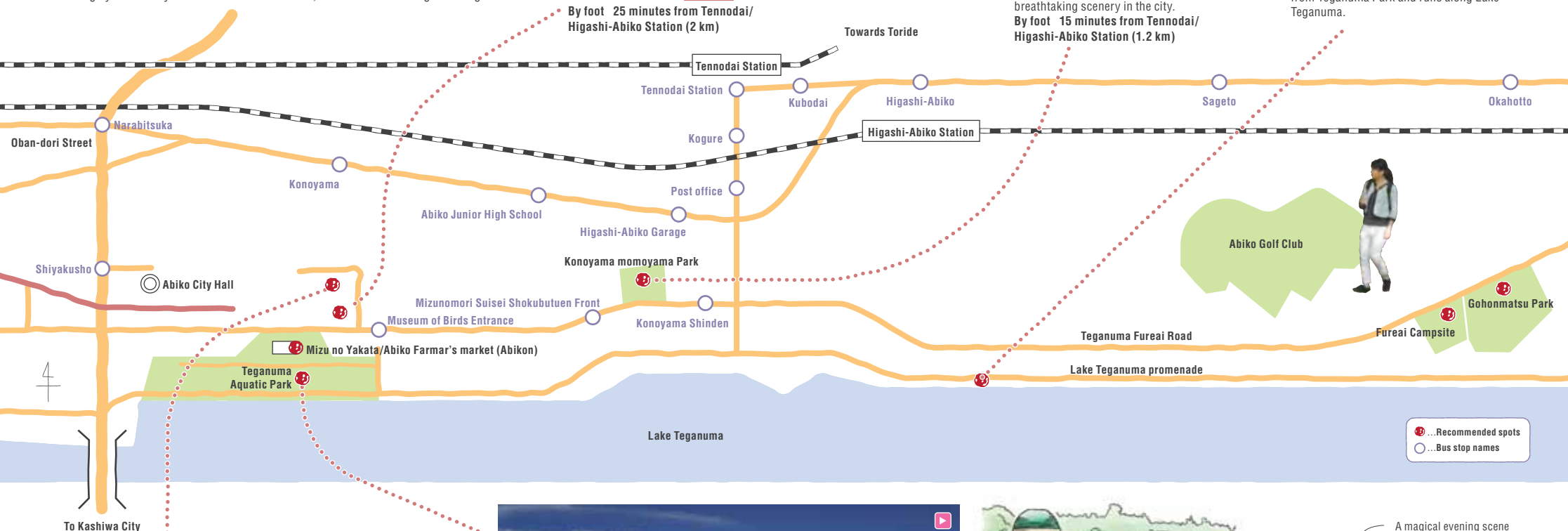
This is a park atop a hillock from which you can catch a commanding view of Lake Teganuma below you. The scenery of Lake Teganuma visible from the southern side is amazing, making it one of the premiere points for breathtaking scenery in the city.

By foot 15 minutes from Tennodai/Higashi-Abiko Station (1.2 km)



Lake Teganuma Promenade

There is a roughly 5 km promenade that starts from Teganuma Park and runs along Lake Teganuma.



Yamashina Institute for Ornithology

This is a world-famous research institute that specializes in birds. It has approximately 60,000 bird specimens, including some species that are extinct or rare, as well as some 40,000 volumes of precious literature on the subject. The institute plays an important role in ornithology in Asia by carrying out conservation activities on albatross and other rare species, as well as ecosystem studies and more. (Can be toured on the fourth Friday of every month, by reservation only)

115 Konoyama, Abiko City
04-7182-1101

By foot 25 minutes from Tennodai/Higashi-Abiko Station (2 km)



Teganuma Aquatic Park - Mizu no Yakata

See P12

By foot 27 minutes from Tennodai/Higashi-Abiko Station (2.2 km)



A magical evening scene at Lake Teganuma

Lake Teganuma walk

Abikon Farmer' s Market and New Planetarium
Bustling Center of Activity at Lake Teganuma!

Mizu no Yakata & Farmer's Market / Farm Restaurant

193 Konoyama shinden, Abiko City
04-7184-0555 Abikon: 04-7168-0821 MaiMai-Tei : 04-7168-0504
Open: 9:00 to 17:00 Abikon: 9:00 to 18:00 MaiMai-Tei: 11:00 to 17:00
Closed: Fourth Wednesday of every month (or the preceding Wednesday if this falls on a holiday), and December 29 to January 4
Abikon and MaiMai-Tei are only closed from December 31 - January 4
Entry fee: Free
Access: Bus from Abiko Station, get off at the Shiyakusho-mae stop and walk five minutes (there is a bus that passes by the Museum of Birds on weekends)
By foot 27 minutes from Tennodai Station (2.2 km)



The panoramic views from Mizu no Yakata on the shores of Lake Teganuma offer stunning vistas.

At Mizu no Yakata in Teganuma Aquatic Park, visitors can experience the majesty of Lake Teganuma and the appeal of Abiko City. A farmer' s market overflowing with fresh, local produce, a restaurant that uses local ingredients, a planetarium that bowls visitors over with its impressive images, a showroom where visitors can learn about the history and living creatures of Lake Teganuma, and an observation room where visitors can get a commanding view of Lake Teganuma are just some of the facilities that everyone from children to adults can enjoy. Coin showers are available to be used as a facility for relaxing after doing sports, such as cycling and jogging.



Visitors can enjoy fresh ingredients from the local region at the restaurant



MaiMai-Tei Seasonal Kitchen is a restaurant based on the themes of Japanese cuisine and healthy cooking. Its menu makes excellent use of local rice and vegetables to offer subtle, soothing flavors.



Terrace seating is also available.



Abikon is a farmer' s market overflowing with vegetables gathered from the local region that are safe, sound, and fresh. It is run by the farmers themselves. It also sells popular local products and souvenirs from famous shops in the area.



Visitors will be able to see Mount Fuji and Tokyo Sky Tree through the binoculars of the observation room.



Lake Teganuma Station is a place where visitors can learn about the birds, fish, and plants that live in and around Lake Teganuma.



The planetarium is equipped with both digital projectors and pinhole projectors. Here, visitors can enjoy impressive images. (100 JPY for high school students and above for up to 50 people)



At Teganuma Aquatic Park, facing Lake Teganuma, the "Jabu Jabu Ike (splash pond)" , very popular among kids, has been renewed.

In this museum, you'll meet birds from Lake Teganuma and around the world. You'll study the fascinating science of ornithology, and most of all, you'll come to realize the importance of coexistence among birds and people.



Museum of Birds

234-3 Konoyama, Abiko City 04-7185-2212
 Hours of operation: 9:30 – 16:30
 Closed: Mondays (or the next weekday if this is a national holiday), December 29 – January 4, internal organization days
 Entry fee: 300 yen for general admission, etc.
 Access: Bus from Abiko Station, get off at the Shiyakusho Front stop and walk five minutes (there is a direct bus on weekends)
 By foot 25 minutes from Tennodai/ Higashi-Abiko Station (2 km)



The first thing you see immediately away upon entering the museum is an egg from an elephant bird, a giant bird that has gone extinct. Though it is a replica, visitors can actually feel it. The exhibition rooms have displays on the origins of birds and the history of their evolution, the restoration of Archaeopteryx fossils, and stuffed and mounted birds from around the world organized by species. Be sure to check out the corners where you can catch a glimpse of nature and seasons of Lake Teganuma, as well as the past and present of the birds that have lived there.



The elephant bird was the world's first giant bird, and was only found in Madagascar.



We display in Diorama the nature and birds living in and around Lake Teganuma.



At the World's Birds Corner at the 3rd floor, we display about 270 kinds of stuffed birds by category, showing variation of birds' form.



It offers restored models of legendary birds and replicas of their skeletons to excite visitors. Displays include the Diatryma, the strongest bird in history, the Moa, the tallest bird, and the proto-penguin that lived in the seas.



Sample of a precious Crested Ibis prior to its extinction in the wild.

All of them are full size, from the stuffed and mounted ones created from skeleton samples to the diorama sets. A must-see for anyone aiming to increase their knowledge of ornithology.



The museum shop is full of lovely stuffed birds, accessories, postcards, and other items.

Rich Water and Greenery

Abiko is surrounded by water in the form of Lake Teganuma and the Tone River, and is full of trees growing pleasantly. You're bound to rediscover the wonder of nature by coming in contact with its nature and people.

Japanese nutmeg tree at Togenji Temple See P25



Lake Furutonenuma

This is a crescent-shaped swamp that was left behind when a meandering section of the Tone River was diverted to flow directly into this area as part of the flood-control works on the river that were initiated at the end of the Meiji Period. It is now a natural treasure, and one of the 100 most famous views of the Tone River.

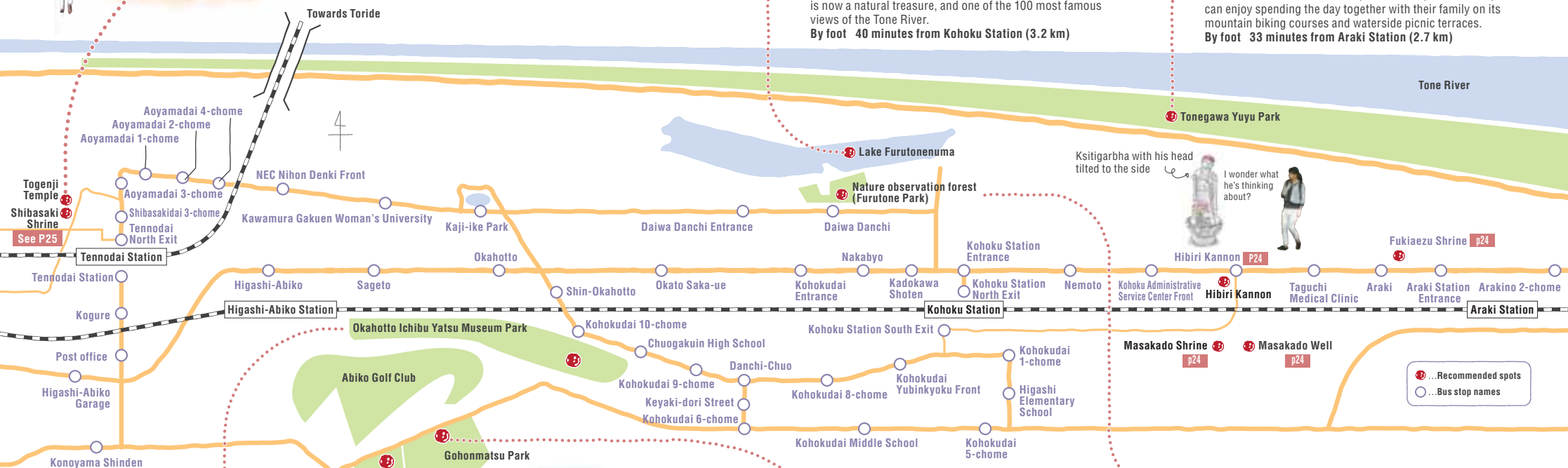
By foot 40 minutes from Kohoku Station (3.2 km)



Tonegawa Yuyu Park

This is a park in the Tone River flood plain with an area of 86.3 ha that is full of nature. There are three different biotopes within the park. Visitors can enjoy sports in the middle of its nature on its baseball diamond, soccer field, and so forth, and can enjoy spending the day together with their family on its mountain biking courses and waterside picnic terraces.

By foot 33 minutes from Araki Station (2.7 km)



Okahotto Ichibu Yatsu Museum Park

This is a place where rural landscapes stretch out. We encourage visitors to enjoy themselves while upholding the "Yatsu Pledge," which includes not bringing any living things in with them nor taking them out.

611 Ichibu, Abiko City (Work Shed)

By foot 20 minutes from Kohoku Station (1.7 km)



Fureai Campsite

 See P18


Gohonmatsu Park

The park contains tree-shrouded paths and gazebos.

By foot 27 minutes from Higashi-Abiko Station (2.2 km)



Nature observation forest (Furutone Park)

This is a forest with roughly 2.9 ha of forest cover located on an elevated highland to the south of Lake Furutonenuma. It is claimed that Dewanokami Kawamura built Nakabyo Castle in 1541 within the grounds, where the remains of a dry moat still exist. Traces of the excavation of Nakabyo Castle still remain.

By foot 20 minutes from Kohoku Station (1.5 km)

Nature walk



Whether you be born to play or tease,
you will start to move if you hear the voices of playing children

Spend a Weekend Like in a Resort



Fureai Campsite

The camp site is used by the locals as a place for relaxation in which they can enjoy seasonal flowers year-round in a rich natural environment. This camp site is located on an elevated section of ground with a commanding view of Lake Teganuma adjacent to the lushly green Gohonmatsu Park. It is fully equipped with a tent site, multipurpose square, cooking area, campfire area, flush toilets, and more. Cooking utensils are available for free to facilitate camping and other outdoor activities. Visitors must make a reservation to stay here.

1395 Okahotto, Abiko City
Culture and Sports Section, Board of Education
04-7185-1604 (weekdays only)



A free parking area is available next to the site.



Sailboats

The Albatross Yacht Club, based in Lake Teganuma, organizes as needed sailboats experience events for the general public. Let's go for a ride on a sailboat you have dreamt of.

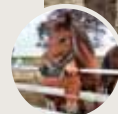
Inquiries npo_albatross_yacht_club@yahoo.co.jp



Canoes

The Teganuma Canoe Club is based in Teganuma and provides activities both inside and outside the prefecture to let people enjoy canoeing in contact with nature while promoting intergenerational exchanges. Visitors can come to observe or try riding a Canoes by themselves.

Website <https://teganumacanoet.takara-bune.net>



Horseback Riding Nakama Club

This club welcomes any visitors, from people who never ride a horse to more experienced people, for light-hearted and safe horseback riding experience and lessons. Children are also welcomed to ride one of the many gentle horses of the club.

1027-6 Ezochi, Abiko City
04-7188-2864

Blueberry Picking Experience

Abiko Blueberry Garden (Teganuma field/Kohoku field)



Visitors can pick blueberries in two fields in the city from early July to the end of August.
(Teganuma field) Nedo Shinden, Abiko City / (Kohoku field) Nakabyo, Abiko City
080-2551-3597

Ripe Blueberry Field Kaimu



Visitors can pick ripe blueberries from mid-June to early September. Rice, jams, and other products are also sold there.
826 Fusa, Abiko City
04-7189-2825

Fishing Experience Readily for Everyone



Okawa Fishing Pond

This pond is a fun spot for Japanese crucian carp fishing that is deep and difficult. Tournaments are held in spring and fall.
177 Konoyama Shinden, Abiko City
04-7184-4922



Suzuki Fishing Pond

A fishing pond popular among fishermen looking for large Japanese crucian carp. A big catch prize giving the right to obtain gifts or coupons is awarded.
145 Okahotto Shinden, Abiko City
04-7182-2663



Kojoen

Try catching Japanese crucian carp or common carp in the fishing pond or rent a boat to search for bighead carps and black bass.
20 Abiko Shinden, Abiko City
04-7185-5300

Outdoor walk



Lake Teganuma Tour Bike Rental

The road around Lake Teganuma is flat and perfect for cycling. Visitors can rent bicycles at the following facilities.

- › Cycle park Abiko Minami (South entrance of JR Abiko Station)
 - › Teganuma Park
 - › Teganuma Aquatic Park multipurpose parking area
- 04-7188-2204 (weekdays),
090-4520-3603 (day of rental only)



Railway Experience at Teganuma Park

These vehicles resembling Shinkansen trains are very popular with children and adults alike.
Price 200 JPY 1 ride 2 rounds (free on the Children's Day (5/5), Prefecture Citizens Day (6/15), and Abiko's Founding Day (7/1)) Coupon tickets are available.
Open During weekends and holidays from April to September: 9:30-17:00; October, November, and March: 10:00-16:00. *Closed between 12:00 and 13:00 for maintenance. *Operate each day except on Monday during the Spring and Summer public school holidays.
04-7188-2204 (weekdays),
090-4520-3603 (days of operation only)



Boats and Swan Boats Rental

Boat rental is available for fishing and also for enjoying on the lake as a family or couple. Boat rental is available at the following shops.

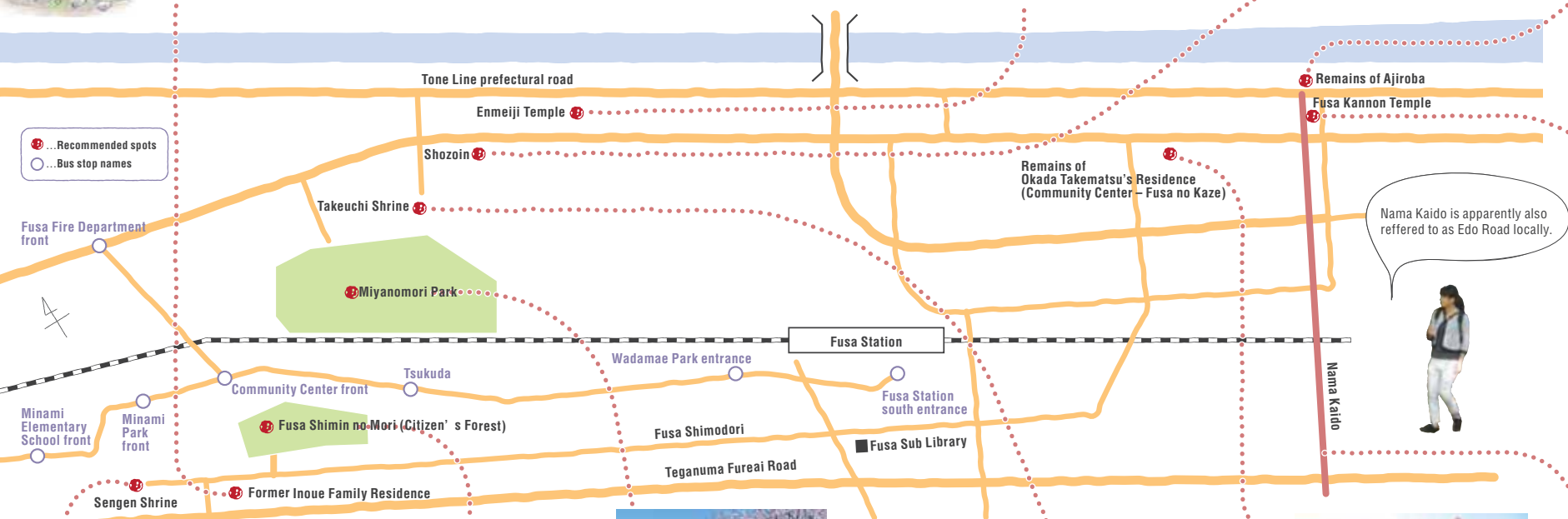
- › Kojoen: 04-7185-5300
- › Boat Center Koike: 04-7184-7117
- › Teganuma no Koike (Fishing tickets and boat rental only): 04-7182-1015



Former Inoue Family Residence
See P22

The Waterfront Town of Fusa: History of the Development of New Fields

This region has apparently been a growing area for hemp since long ago, which the people are said to have called fusa. The area once bustled as an important transit junction for people transporting fish from places like Choshi to Edo to get there faster. This road is called Nama Kaido ("Fresh Fish Road"). Before long the riverbank took over this role from it, yet even after that Fusa was visited by people visiting the 88 temples of the New Soma Pilgrimage. What is more, land reclamation began in Lake Teganuma starting in the Edo Period, with the current Lake Teganuma having been formed around the 1950s.



Sengen Shrine

The main building of this shrine is found atop a hill that has been likened to Mount Fuji. This building was built above a slightly elevated forest that visitors arrive at after passing through a shrine archway gate and climbing a steep set of stone steps. It was constructed in 1645. It is usually quiet, but there is a lively festival held every year on July 1 to coincide with the start of the climbing season at Mt. Fuji.
2036 Fusa, Abiko City
By foot 18 minutes from Araki Station (1.5 km)



Fusa Shimin no Mori (Citizen's Forest)

This is a forest that is approximately 2.7 ha. Visitors can stroll around a walking path that is about 700 m which goes around the pond in the center of the forest. Along the way there are open spaces for bird watching, as well as open spaces containing Aphananthe oriental elm, bamboo, and flowers, respectively. Visitors can enjoy a leisurely stroll along the path, and can also have fun watching the waterfowl here.
By foot 17 minutes from Fusa Station (1.4 km)



Miyanomori Park

This park capitalizes upon having a hill that stretches to Takeuchi Shrine, as well as wetlands running along the JR Narita Line. The park has an area of 3 ha. More than 3,000 azalea plants have been planted here, along with a variety of trees that include cherry trees, oak trees, and sawtooth oak trees, and visitors can enjoy their beauty throughout each of the four seasons. The scenery during cherry blossom season in particular is highly recommended, with the scene of rows of cherry trees.
By foot 10 minutes from Fusa Station (850 m)



Enmeiji Temple

Here is enshrined Kokuzo Bosatsu (Akasagarbha Bodhisattva), which was received from Horyuji Temple in 1593. The current Kokuzodo was destroyed in a fire in 1904, but was reconstructed in 1933. It is the 24th sacred temple issuing amulets of the New Soma Pilgrimage.
2318 Fusa, Abiko City
By foot 13 minutes from Fusa Station (1.1 km)



Shozoin

The mountain gate features new stone gates that are pure white and have engravings of the two guardian Deva kings. There is a stone statue of Avalokitesvara on the left-hand side of the road leading to the shrine. It was constructed in 1592, and features the 21st and 37th sacred temples issuing amulets of the New Soma Pilgrimage.
2285 Fusa, Abiko City
By foot 15 minutes from Fusa Station (1.1 km)



Remains of Ajiroba

Ajiroba was the place where the nets used for fishing were set out to dry and serviced. There was a thriving fishing industry for carp, eel, and salmon in the vicinity around Fusa, which experienced its golden age between the Meiji Period and the early days of the Taisho Period.
By foot 17 minutes from Fusa Station (1.3 km)



Fusa Kannon Temple

This Kannon Temple is located at the eastern tip of Abiko City around where Nama Kaido begins. The principle object of worship here is an idol of Bato Kannon. It is said that the temple was built in the Genroku Era (1688-1704) by the fish merchants and horse owners to comfort the spirits of the horses that would carry fish along Nama Kaido. It is the 58th sacred temple issuing amulets of the New Soma Pilgrimage.
10 Miyako, Abiko City
By foot 16 minutes from Fusa Station (1.3 km)



Remains of Okada Takematsu's Residence (Community Center - Fusa no Kaze)

Okada Takematsu made enormous contributions to the weather service, including naming the meteorological term "typhoon," setting in place radio communication aboard oceangoing ships ahead of the rest of the world, and setting up a seismic observation network. His contributions and a chronological record have been inscribed in the lobby.
2972-1 Fusa, Abiko City
By foot 14 minutes from Fusa Station (1.1 km)



Takeuchi Shrine See P25



Nama Kaido

The development of Fusa began when the Nama Kaido was first established. People would transport fresh fish from Choshi and Kashimanada to Edo along it, and starting in the 1750s it became the main road for shipping fresh fish.
Vicinity around Miyako, Abiko City
By foot 10 minutes from Fusa Station (750 m)



This is an important structure with a full-fledged yakui-mon gate still extant from which visitors can get a feel for the history of the land reclamation of Lake Teganuma that began in the Edo Period.

Former Inoue Family Residence

(Cultural Property by Abiko City)

1 Aijima Shinden, Abiko City

Inquiries: Culture and Sports, Board of Education, Section Abiko City 04-7185-1583 (weekdays only)

Hours of operation: 9:00 – 16:00 (entry until 15:30)

Closed: Mondays (or the next weekday if this is a national holiday), December 29 - January 3

Entry fee: Free (as it is currently being organized only parts are open to the public)

Transit: About a 30 minute walk from the south exit of the JR Fusa Station

By foot 18 minutes from JR Fusa Station (1.4 km)



The main building is representative of the social standing of a typical upper-class farm family from the end of the Edo Period. It has some additions that were made in the Showa Period.

Nine structures here, including the front gate, outer wall, and storehouse, were registered Cultural Property by Abiko City in 2012. The Inoue family took part in the Lake Teganuma land reclamation works carried out as part of the Kyoho Reforms by Yoshimune Tokugawa, the 8th Shogun, and devoted itself to new field development as village leaders from generation to generation. New field development at Lake Teganuma was completed in 1951. The main building was built during the reign of the 9th Head of the Family, and is in a style that was typical of upper-class farm families from the Edo Period. In addition, a front gate still remains that is a full-fledged yakui-mon gate from the end of the Edo Period that gives visitors a sense of the family's high social standing. At present, the inside of the main building is closed to visitors because it is being renovated, but visitors can view how it looks from the courtyard.



A new storehouse was built early in the Showa Period. It utilized technology that was cutting-edge back in its day.



The second storehouse renovated in 2018 after 3 years of work using techniques of the time.



The front gate was restored. It used roof tiles and pillars from those days, with only those materials that it was lacking having been newly furnished on it. The details of the design are must-see.



The steps on the east side form an official entryway that was added early in the Showa Period. It demonstrates the social standing of the Inoue family, members of which served as village leaders over successive generations.



Braziers in wooden boxes, iron kettles, paper lanterns ... the house looks like it could be the setting for a historical drama as it stands now.



The main building visible from the front gate.

A Trip through Eternity

Here there are lots of things and places that have been preserved on this land since long ago. We urge you to come into contact with the doings of the local people, which have been watched over since long ago by the ancient trees, as well as the history of Abiko, which has been preserved down to the present without being swayed by the passage of time.



Fukiaezu Shrine (Cultural Property by Abiko city)

The deity enshrined here is Fukiaezu Ugaya, who was born to Hori-no-Mikoto, the famous god of the mountain from the legend of "Umihiko the Mountain God," and Princess Toyotama, who is the daughter of the god of the sea. Every year a festival is held on the evening of August 15. The main shrine features magnificent engravings of mythic hero's Ama-no-Iwato, Yamata-no-Orochi's renunciation, Jinmu Tosei, and more. It also has a giant ginkgo tree.

Beyond 1812 Araki, Abiko City By foot 12 minutes from Araki Station (950 km)



Hibiri Kannon

This is said to have been established in 1662. Images of Avalokitesvara, the protector deity of Taira no Masakado, are enshrined here. The door to the main temple building and the floor of the Kannon Temple feature the Navagraha crest, which is also the crest of Masakado. One corner of the grounds faces the Narita Kaido and has a statue of Ksitigarbha with his head tilted to the side standing there (photo on the cover).

90 Hibiri, Abiko City
By foot 17 minutes from Kohoku Station (1.4 km)



Masakado Shrine

Taira no Masakado, a military commander from the Heian Period, lived in the Hibiri district that runs along the Narita Kaido when he was a child. It is said that when he was killed in battle his soul mounted his horse and galloped from the south up across Lake Teganuma to ascend the highland of Hibiri, where he adopted a praying posture facing the morning sun.

131 Hibiri, Abiko City
By foot 18 minutes from Kohoku Station (1.5 km)



Masakado Well

Legend has it that this well, which is located near Masakado Shrine, was dug by Masakado himself. Some people apparently visit it as a spot that is thought to be full of mystical energy.

By foot 17 minutes from Kohoku Station (1.4 km)



Togenji Temple (Cultural Property by Chiba Prefecture)

In front of the main building, there is an enormous Japanese nutmeg tree that is one of the largest in the northern part of the prefecture. It is called "Magaya tree" by the locals. It is claimed to have been planted by hand by the priest Ko-ohn, who founded the 88 temples of the Shikoku Pilgrimage. Japanese nutmeg trees are tall, evergreen trees in the Taxaceae family that yield hard lumber that has been used to make dugout canoes and Buddhist statues since long ago. The tree stands 17.5 m tall and has a circumference of 3.8 m, and if the tree is as old as it is claimed to be then it is more than 200 years old.

170 Shibasaki, Abiko City
By foot 26 minutes from Higashi-Abiko Station (2 km)



Takeuchi Shrine

The karashishi (portrait of lions) situated in front of the shrine archway along the pine tree-lined road to the temple features a portrait of lions with their children in tow, which is rare for those in this vicinity. As such, it is said to represent the virtues of being blessed with children and perpetuating one's own family through descendants.

1218 Fusa, Abiko City
By foot 11 minutes from Fusa Station (850 m)



Shibasaki Shrine



Formerly called Myoken Shrine and Kitaboshi Shrine, it became Shibasaki Shrine in 1880. Legend has it that both Yamatotakeru-no-Mikoto and Taira no Masakado prayed at this shrine for good fortune in war. There is a stone commemorating the Black Tortoise, which was a creature from Chinese mythology that ruled over the north as a god (it is in the shape of a tortoise).

737 Shibasaki, Abiko City
By foot 10 minutes from Tennodai Station (700 m)



Nenokami Daikokuten

The Goma Fire Festival for Good Fortune is held on the fourth Sunday of October every year. Nenokami, the idol worshiped here, is considered to be especially beneficial for lower back ailments, and so metal sandals, which are a symbol of the feet and back, are dedicated as offerings within the grounds.

2-27-10 Kotobuki, Abiko City
By foot 21 minutes from Abiko Station (1.7 km)



Abiko City's Cherry Blossoms

There are plenty of spots with cherry blossoms located throughout Abiko City. Cherry blossoms are well-suited to the atmosphere of Abiko. All things considered, viewing the cherry blossoms at night reflected on the waters of Lake Teganuma could be said to be a seasonal brilliance unique to Abiko.

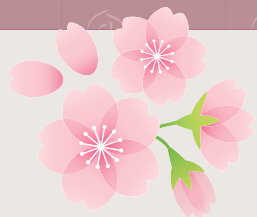


Lake Teganuma Promenade



It is illuminated from the end of March through mid-April

In the wide open spaces of Abiko: The color of the cherry blossoms nicely complements the city. The rapeseed flowers along the promenade are also stunning



Teganuma Fureai Road



Konoyama Momoyama Park
By foot 15 minutes from Higashi-Abiko Station (1.2 km)



Teganuma Park By foot 10 minutes from Abiko Station (750 m)

Gatherings in Abiko

A variety of events are held in Abiko throughout the year that attract a great many people. People that visit once tend to turn up again next year because of how fun they are, and so the number of people visiting Abiko is on the rise from year to year. There are events that can be enjoyed together with the family, some for competing on Lake Teganuma, some for getting a feel for history, as well as some for getting in touch with nature.



Enjoy Lake Teganuma Festival!

Second Sunday of May

Abiko is hustling and bustling year-round!



Lake Teganuma Fireworks Festival

First Saturday of August



Lake Teganuma Triathlon

Late August



Takeuchi Shrine Festival

Mid-September

Japan Bird Festival

Early November



Bamboo Lantern Evening in Former Murakawa Villa

Late October or Early November



Folk Entertainment Festival

First Sunday of December

Staying in Abiko

Traditional Japanese-style inn Kadomatsu Honten



3-4-25 Honcho, Abiko-shi
Open Check-in 15:00 / Checkout 10:00
Closed Irregular days Parking Yes
Smoking Prohibited all-day 04-7182-1335
By foot 6 minutes from Abiko Station (500 m)

This traditional inn specialized in cooking (Kappo ryokan) has a long history. Emperor Meiji and important figures of the Shirakaba school stayed here. Visitors will spend a relaxing time in this inn that serves beautiful yet delicious food and offers rooms with a great Japanese design.

Tomimatsu Ryokan



2-22-19 Kotobuki, Abiko-shi
Open Check-in 15:00 / Checkout 10:00 *Please contact the staff.
Closed Open every day Parking Yes (also for large vehicles)
Smoking Prohibited all-day 04-7182-2003
By foot 18 minutes from Abiko Station (1.4 km)

This traditional inn, built next to Lake Teganuma, offers Japanese rooms only at reasonable prices. Discount prices are available for long-term stays and groups. With its banquet hall that can accommodate up to 100 people, it is the perfect place to hold seminars and conferences.

Hotel Mark-1 Abiko



1-9-14 Shibasaki-dai, Abiko-shi
Open Check-in 15:00 / Checkout 10:00
Closed Open every day Parking Yes (also for large vehicles)
Smoking Smoking rooms on the 4th, 6th, and 8th floors.
04-7186-1717
By foot 1 minute from Tennodai Station (170 m)

Here, visitors will recover from their tiredness thanks to the artificial hot spring and the rooms spotlessly clean. The "lady's area" is extremely popular among girls, who can relax there serenely and comfortably. A meeting room is also available for gatherings and seminars.

Business Ryokan Fusa



2281-1 Fusa, Abiko-shi
Open Check-in 15:00 / Checkout 10:00
Closed Open every day
Parking Yes (15 vehicles) *Available for large vehicles up to 4 t.
Smoking Smoking allowed in several rooms. 04-7189-2196
By foot 14 minutes from Fusa Station (1.1 km)

This inn offers rooms are a reasonable price not only for business persons but also tourists and travelers. The menu at the restaurant that changes every day and the large bath open all-day make it the perfect place for long stays.

Abiko Souvenirs

Local souvenirs

Inquiries: Abiko City Local Souvenir Liaison Committee
(Secretariat: Abiko City Commerce and Industry Association)
04-7182-3131



March 1 is
local souvenir
day

3 = san
1 = pin
This is how it
is read

Abiko City's mascot character
Teganuma no UNAKICHI-san

Founded in 1855
Characterized by its great taste
and flavor and bright colors

Yamatsune Miso



Additive-free. Its sweetness is attained
simply by converting the rice
starch to sugar,
which offers a feel for its great taste.

Sweet Sake



Yamatsune Shokuhin Co., Ltd.
Miyako12-21 04-7189-2734

Spicy flavor from the chili pepper
added as an accent

Miso Ginger with Black Pork

Recommended as an all-purpose
seasoning and condiment
used in tofu and pork dishes.

Ginger Extract

Full of local ingredients

Pork and Onion Miso Combo



Its deliciousness comes from our
dedication to fresh ingredients

Glazed Eel



Since only the best konbu seaweed
from Hidaka is used, consumers can
enjoy the flavor of top-class konbu.

Sweet Konbu Seaweed



Zakkotsukudani



Yasuiya Limited 3-5-1 Honcho 0120-353-698

Shirakaba Curry

(sealed pouch; pork / chicken / beef / Kawajo version of chicken)



Gomi Shoten Co. Ltd.
3-4-9 Honcho 04-7183-7700

Lemons grown in the Setouchi area and eggs
produced in Chiba Prefecture are worked into the
dough, which is baked until it is light and fluffy in
such a way that preserves all of the lemon flavor.

Lemon Baum Cake (Winner of the Minister of Agriculture, Forestry and Fisheries' Award)



UNAKICHI-san conveys events held from season to
season in Abiko

Cookies with UNAKICHI-san's Picture



Sweet potato cream nestled
in a sponge cake

Imokko (sponge cake)



Eastern and Western MENUETT Confections
Kohokudai Store: 1-18-3 Kohokudai 04-7188-5543
Abiko Store: 4-1-7 Abiko 04-7183-1122

Coarsely ground bean paste and finely
ground bean paste wrapped around
each other, reminiscent of ripples on
Lake Teganuma

Tega Shigure (bean paste cake)



Obanyaki bursting with anko paste and cream
made to resemble UNAKICHI-san's face

UNAKICHI-yaki Baked Sweets



Shofuku
4-21-12 aoyamada 04-7184-8866

Silver Medal at the Japan Great Beer Awards 2019!
Blended with malt from Germany.
Beer characterized by a rich, strong, and deep taste.

Masakado Beer



Komainu Brewery
5-8-15 Kashiwa, Kashiwa-shi
04-7199-7774

Streams and kappa designs inscribed
using India-ink painting techniques

Yukatas, hand towels, and handkerchiefs with kappa (river people) patterns



Office SS HANSAM
2-9-5 Kujike
04-7185-4313

This new product comes in six varieties of flavors.
It is a Japanese baked sweet with a crust that has
a texture like that of a chewy pastry.

UNAKICHI-san No Oyatsu Snacks



Select finely ground bean paste and
rice-flour confections ensconced in a
spongy outer layer

Bungakuyaki (bean paste cake)

Fukuichi Confectioners 8-6-2 Kohokudai
04-7188-0160

Made using select white wines and
freshly-gathered eggs

Wine Cake (plain / fruit / chocolate / green tea)



Baked sweets having anko with white kidney
beans and large fava beans wrapped with the
pie dough full of butter.

Abiko Pie



Tommy Inc.
1-11-9 Abiko 04-7185-3963

Each item is individually
hand-crafted by artisans

Japanese Instrument and Dance Pouches



Maruei Shoten 92-15 Hibiri 04-7187-6400

Abiko, which has been called the
"Kamakura of the north," as expressed
through coffee. Enjoy three different flavors.

Abiko Coffee



Coffee Club Ems Company
139-4 Wakamatsu 04-7186-1857

Made using cream with
a flavorful milk taste and eggs
from Nasu

Oban Roll (cream / green tea) Swiss Roll



Avignon Co. Ltd.
Tennodai1-1-30 04-7182-0501

Large pieces of karaage (fried chicken)
sticking out of the bowl!
A new famous product from Abiko Station that
has been covered by the mass media!

Karaage Soba from Yayoiken



Yayoiken
2-4-3 Honcho
04-7182-0501

inside Abiko Station platform

Abstract drawings that thrill the viewer

Cloisnone à la Carte



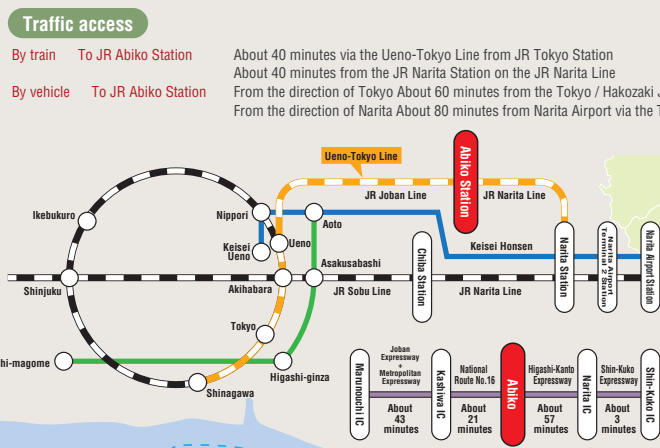
Picture frame

Atelier Michi
3-2-10 Arakino
04-7188-0968

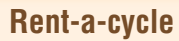
Various accessories

A photograph of a stone stele with a pointed top, featuring a large inscription in Chinese characters. The stele is weathered and has a rough, textured surface. The characters are carved into the stone and are arranged in a vertical column. The top of the stele is pointed, and the base is slightly wider. The background is a plain, light-colored surface.

Ne



-
- A map of the area around Fushimi Station, showing the route to Narita. The map includes the following landmarks and locations:
- Forest of Takeuchi Shrine
 - Myanonomori Park
 - Enmeiji Temple
 - Shozoin
 - Remains of Okada Takematsu's Residence
 - Remains of Ajiroba
 - Fusa Kannon Temple
 - Remains of Nana Kaido
 - Yamatsune Shokuhin Co., Ltd.
 - Fusa Station
 - To Narita



<p>Abiko Guidebook</p> <p>ABI ROAD</p>	<p>Inquiries: Abiko City Secretarial and Public Relations Department 04-7185-2493</p> <p>Issued by: Abiko City (Issued March 2021) Created by: Hoshosha Co., Ltd.</p> <p>Translate Cooperation in English Abiko International Relations Association</p>
---	---

Cover photos (top left to bottom right) (1) Sugimura Sojinkan Memorial House and Museum, (2) Swan boats in Teganuma Park, (3) Remains of the Residence of Shiga Naoya, (4) Tega Ohashi Bridge and a sailboat, (5) Fureai Campsite, (6) Takeuchi Shrine Festival, (7) Original handwritten manuscript by Shiga Naoya, (8) An engraving at Fukiaezu Bridge, (9) Inside the Former Inoue Family Residence, (10) The kappa statue at Lake Teganuma, (11) Mizu no Yakata, (12) Historic Site of the Kano Jigoro Villa, (13) Museum of Birds, (14) Canoe trial lessons, (15) Sunset as viewed from Lake Teganuma Teganuma Aquatic Park